

285 PSI Ductile Iron Butterfly Valve

APPLICATIONS

- HVAC (Condensors, Chilled Water, Hot Water Heating)
- Domestic Hot & Cold Water
- Isolation and Throttling
- Not Intended for Air Service

MATERIALS & CONSTRUCTION

- Ductile Iron Body
- Stainless Steel Disc
- Extended Neck (for insulation purposes)
- Geometric Drive
- EPDM Molded-In Liner
- 250 PSI Bi-directional Dead End Service with no need for a downstream flange
- Available in Bare Stem, Lever and Gear Operator
- Size Range: 2" - 12"

DESIGN CRITERIA

- Install between standard Class 150 steel/ductile flanges
- Conforms to MSS SP-67 and MSS SP-25 and API 609
- Designated by the United States Coast Guard as suitable for "Category A" service as defined by 46 CFR 56.20-15.



WD 5022



LD 5022

FEATURES	BENEFITS
Threaded Collar Bushing	Blow-out proof stem. Secondary stem seal.
Extended Neck	Allows for 2" of insulation below mounting pad.
Molded-in Liner	Flange seals fully supported by metal. Provides unparalleled bi-directional dead end service. Stabilizes upper and lower bushings.
1-Piece Superior Strength Solid Stem (geometric drive)	Provides superior stem alignment for smooth operation. Smaller diameter that aides in more streamlined flow. Requires no fasteners in the wetted area.
Ductile Iron Body	More than twice the strength of cast iron with more durability and elongation (ductility.)

SAMPLE SPECIFICATION

LINE CONTROL VALVES - BUTTERFLY VALVES FOR HIGH PRESSURE

Valves shall be lug, flanged or IPS grooved body style manufactured in accordance with MSS SP-67. 2"-12" rated to 285 psi. Non-shock cold water working pressure. Body to have extended neck for insulating and to be ductile iron. Valve to have stainless steel disc or EPDM rubber encapsulated disc with polymer coated body. Stem shall be 400 series stainless steel and shall not have exposed stem to disc fasteners. Sizes 2"-6" shall be lever operated with 10 position throttle plate. Sizes 8" and above shall have manual gear operators. Lug valves shall be capable of bi-directional dead end service at 250 psi without the need of a downstream flange. Flanged and grooved at full rated pressure.

Acceptable Valves:

Lug Body - NIBCO LD5022-3LH-5 G.O.

Grooved Body - NIBCO GD4765-3LH-5 G.O. (2" - 8" only)

Flanged Body - NIBCO FD5765-3LH-5 G.O. (2" - 8" only)

285 PSI Butterfly Valves

Ductile Iron Body • Extended Neck • Geometric Drive
Molded-in Seat Liner • Lug and Wafer Style
(not intended for air lines)

Sizes 2" through 12"

Install between Std. ANSI Class 125/150 Flanges
250 PSI Bi-directional Dead End Service with no need
for a downstream flange

CONFORMS TO MSS SP-67 • MSS SP-25 • API-609
US COAST GUARD "CATEGORY A"

MATERIAL LIST

PART	SPECIFICATION
1. Stem	Stainless Steel ASTM A 582 Type 416
2. Collar Bushing	Stainless Steel ASTM A 236 Type 316
3. Stem Seal	EPDM Rubber
4. Body Seal	EPDM Rubber
5. Nameplate	Aluminum
6. Upper Bushing	Stainless Steel ASTM A 276 Type 316
7. Liner	EPDM Rubber
8. Disc	Stainless Steel ASTM 743 Grade CF8M
9. Lower Bushing	Stainless Steel ASTM A 276 Type 316
10. Body Wafer	Ductile Iron ASTM A 536
11. Body Lug	Ductile Iron ASTM A 536

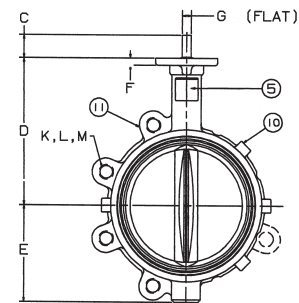
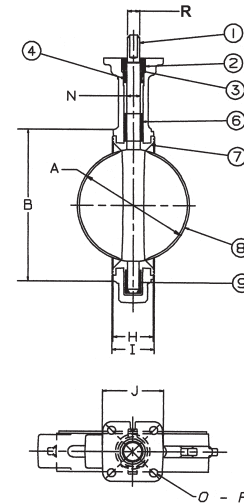


WD 5022
Wafer Style
EPDM Liner
and Stainless
Steel Disc

LD 5022
Lug Style
EPDM Liner
and Stainless
Steel Disc

DIMENSIONS — WEIGHTS

Size	DIMENSIONS											
	In. mm.	A	B	C	D	E	F	G Flat	Metal H	Rubber I	J Square	N Dia.
2	50	2.53	4.00	1.25	5.38	2.88	.38	.312	1.688	1.812	3.25	.500
2½	65	2.90	4.69	1.25	5.88	3.27	.38	.370	1.812	1.938	3.25	.562
3	80	3.15	5.12	1.25	6.12	3.40	.38	.370	1.812	1.938	3.25	.562
4	100	4.09	6.12	1.25	6.88	4.00	.38	.403	2.062	2.188	3.25	.625
5	125	5.13	7.25	1.25	7.38	4.75	.38	.496	2.188	2.312	3.25	.750
6	150	6.13	8.25	1.25	8.00	5.29	.38	.496	2.188	2.312	3.25	.750
8	200	8.13	10.41	1.25	9.25	6.50	.50	.560	2.375	2.500	3.25	.875
10	250	10.13	12.52	1.25	10.50	8.00	.50	.686	2.688	2.812	4.75	1.125
12	300	12.13	15.00	1.25	12.00	9.25	.50	.748	3.000	3.125	4.75	1.250



Size	Capscrew/Stud Data						Lug Weight		Wafer Weight			
	In. mm.	O B.C.	P Dia.	R Dia.	K No.	L Dia.	Wafer Length	Lug Length	M B.C.	Lbs.	Kg.	Lbs.
2	50	3.25	.437	.437	4	5/8-11unc	Refer to BFV Technical Information for bolt lengths	4¾	7	3.2	5.5	2.5
2½	65	3.25	.437	.500	4	5/8-11unc		5½	9	4.1	7.5	3.4
3	80	3.25	.437	.500	4	5/8-11unc		6	9.5	4.3	8	3.6
4	100	3.25	.437	.562	8	5/8-11unc		7½	15	6.8	11	5.0
5	125	3.25	.437	.656	8	¾-10unc		8½	21	9.5	15	6.8
6	150	3.25	.437	.656	8	¾-10unc		9½	24	10.9	18	8.2
8	200	3.25	.437	.781	8	¾-10unc		11¾	34	15.4	28	12.7
10	250	5.00	.562	1.000	12	7/8-9unc	14¼	62	28.1	45.5	20.7	
12	300	5.00	.562	1.062	12	7/8-9unc	17	90	40.9	70	31.8	

NOT RECOMMENDED FOR STEAM SERVICE